



# **AQWEST**

**DEPARTMENT OF HEALTH REPORT**

**MEMORANDUM OF UNDERSTANDING -  
DRINKING WATER QUALITY QUARTERLY REPORT**

**REPORTING PERIOD 01 APRIL 2019 TO 30 JUNE 2019**

**JULY 2019**

REPORT TEMPLATE VERSION: 2.0.5

## Document Revision

Version #	Date Changed	Requested By	Changes
1.2.2	5/10/2012		*Radiological Units to be Corrected *Header to be repeated on tables on new pages *Add Section for Assumptions *Note any value that has a less than symbol to have Zero (0) value *Remove compliance % for items that do not have AWDG Limits *Remove Raw Water ADWG Guidelines *Include Max Value for ADWG Limits *5th Percentile to be removed *Report to include document history *Include Calculations in assumptions section
1.2.3	18/10/2012		*Added Micro Results
2.0.0	9/01/2013	K Woods	*Moved Report to Excel Template
2.0.1	10/01/2014	Water Quality Committee	*Added chlorine residual explanations
2.0.2	20/05/2015	Water Quality Committee	*Remove technical zero statement from assumptions
2.0.3	19/10/2016	B Labza	* Updated Assumptions and Explanations
2.0.4	17/10/2017	K Woods	*Updated 2004 ADWG to 2011 ADWG (as of 1st July 2017) *Updated Number of Compliant Zones to Number of Compliant Samples
2.0.5	19/10/2018	K Woods	*Updated Title Page to remove acronyms (DOH & MOU)

## Assumptions and Explanations

- 1) Field Assessable Tests (Chlorine Residual and pH) are undertaken by competent sampling staff from both Aqwest and City of Bunbury
- 2) As noted in ADWG 2011, 0.6mg/L is the odour threshold of chlorine residual for most people. In some instances it may be necessary to exceed the aesthetic guideline to maintain an effective disinfection residual throughout the system
- 3) Datasets presented and used for analysis in the report are from the Aqwest monitoring program which have been classed as assessable
- 4) Rounding has been undertaken for chlorine residual results to one decimal place to match ADWG, with values less than 5 rounded down and values equal or greater than 5 rounded up.

## **1 Introduction**

### **1.1 Water Provider Information**

**Name:** Aqwest  
**Address:** 5 Mackinnon Way, Bunbury  
**Telephone:** +61 8 9780 9500  
**Facsimile:** +61 8 9780 9509  
**Company Email:** aqwest@aqwest.com.au  
**Chief Executive Officer:** Brad Bevis  
**CEO E-Mail:** brad.bevis@aqwest.com.au  
**DOH Liaison Officer:** Gary Hallsworth  
**DOH Liaison Officer Email:** gary.hallsworth@aqwest.com.au

### **1.2 System Information**

Aqwest supplies potable water to a customer population base of approximately 33,000 with an average system demand of 18ML/day. Aqwest supplies potable water via 6 water treatment plants, 4 reservoirs and 9 pump stations which all feed into one large interconnected zone.

### **1.3 Performance Summary**

Table 1 shows the overall performance of Aqwest against the 2011 ADWG for the period of 01 April 2019 to 30 June 2019.

**Table 1: Aqwest Performance Summary Table**

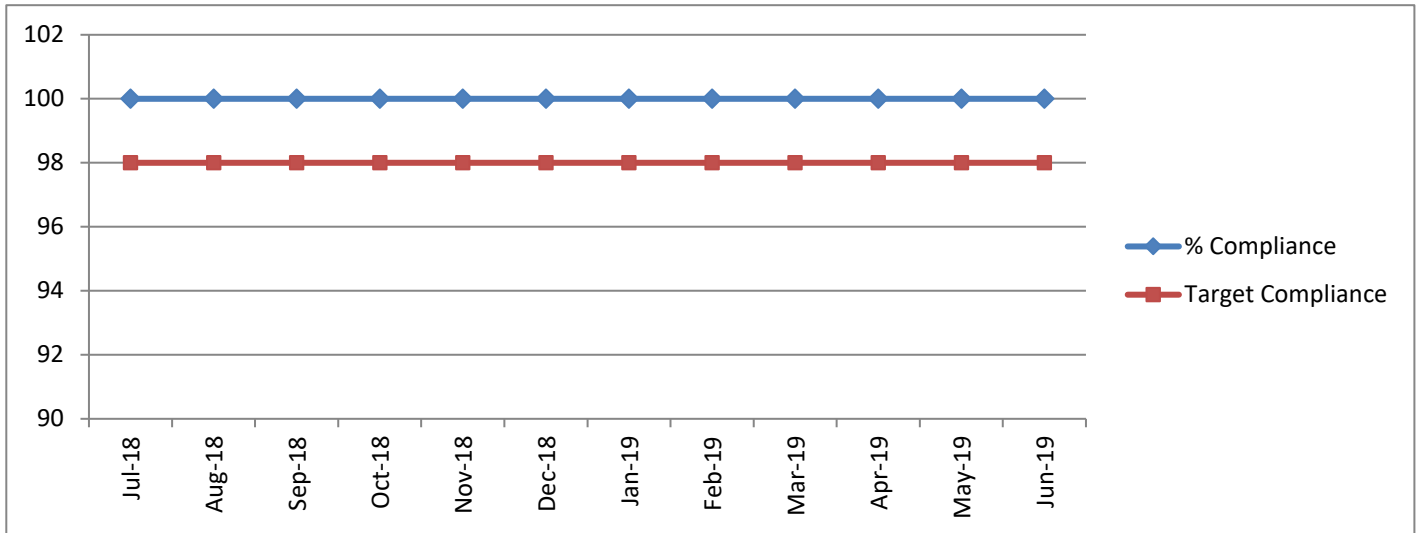
	<b>Compliance From 01 April 2019 to 30 June 2019</b>			
	<b>Number of Samples</b>	<b>Number of Compliant Samples</b>	<b>% Compliant Samples</b>	<b>% Sample Compliance 12 Month Rolling Period</b>
<b><i>Microbiological Quality</i></b>				
Escherichia coli	143	143	100	100
Naegleria	143	143	100	100
<b><i>Chemical Quality</i></b>				
Health Related	158	158	100	100
Non-Health Related	158	158	100	100

## 2 Microbiological

### 2.1 Microbiological Charts

The following charts graphically represent the microbiological information displayed in Table 1.

**Graph 1: Rolling 12 Months Escherichia coli Compliance against the 2011 ADWG.**



**Graph 2: Rolling 12 Months Naegleria Compliance against the 2011 ADWG.**

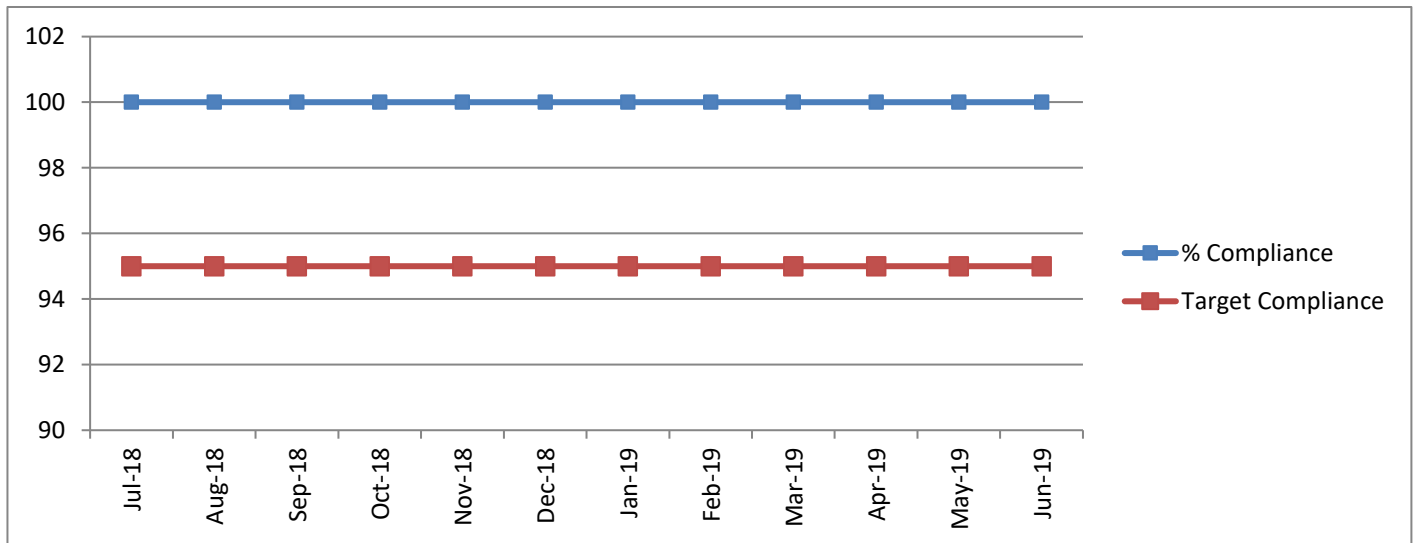


Table 2 lists those sample locations where non-compliant microbiological results were detected, and the remedial actions taken to rectify these non-compliances. An unpopulated table indicates that for the period of analysis, all results were compliant with the 2011 ADWG.

**Table 2: Non-Compliant Microbiological Results and Remedial Action.**

Sample Date	Sample Location	Parameter	Result	Units	Guideline	Comment

### **3 Health Related**

Table 3 lists those sample locations where non-compliant health related results were detected, and the remedial actions taken to rectify these non-compliances. An unpopulated table indicates that for the period of analysis, all results were compliant with the 2011 ADWG.

**Table 3: Non-Compliant Health Related Results and Remedial Action.**

Sample Date	Sample Location	Parameter	Result	Units	Guideline	Comment

### **4 Non-Health Related (Aesthetic) Chemical**

Table 4 lists those sample locations where non-compliant non-health related (Aesthetic) results were detected, and the remedial actions taken if required. An unpopulated table indicates that for the period of analysis, all results were compliant with the 2011 ADWG.

Note: Customer perception of water quality is heavily influenced by aesthetic concerns, and in an era of increasing public expectations of water suppliers, these aesthetic issues may need to be addressed in order to improve customer satisfaction.

**Table 4: Non-Compliant Non-Health Related (Aesthetic) Chemical Results and Remedial Action.**

Sample Date	Sample Location	Parameter	Result	Units	Guideline	Comment

### **5 Radiological Related**

Table 5 lists those sample locations where non-compliant Radiological results were detected, and the remedial actions taken to rectify these non-compliances. An unpopulated table indicates that for the period of analysis, all results were compliant with the 2011 ADWG.

Note: Latest Radiological testing completed February 2019

**Table 5: Non-Compliant Radiological Related Chemical Results and Remedial Action.**

Sample Date	Sample Location	Parameter	Result	Units	Guideline	Comment

## **6 Planned Sampling Summary**

Table 6 shows the number of samples that were planned for the reporting period, and the number of assessable samples already taken.

**Table 6: Planned sampling regime and actual assessable samples taken.**

	<b>Number of Samples Planned to be taken</b>	<b>Number of samples actually taken</b>	<b>% of planned samples taken</b>
Microbiological	143	143	100.0%
Physical Chemical	158	158	100.0%

**Table 7: Location and reason for missed samples**

<b>Date</b>	<b>Location</b>	<b>Schedule</b>	<b>Reason</b>
	Nil		
Total	0		